



**Staff Name:**  
**Zone:** Bushcraft  
**Ability range:** P7-NC3  
**Target Group:** SEN

**Date:**  
**Lesson reference:**  
 Week 6  
 'Minibeast Encounter'

#### Learning Objectives:

- Students to list a range of minibeast and where they might be found.

#### Learning Outcomes:

- Students to engage in touching and looking at minibeasts.
- Students to record activities on a log sheet.

**Challenge:** Make minibeast hotels.

**Differentiation:** Visual aids and keywords used for access group, to help channel their thinking. Teaching assistant to support access group.

**AFL:** Reference to scheme of work.

#### Development of Skills/Cross Curricular

##### LITERACY/COMMUNICATION

Reinforcement of keywords, development of discussions through describing tasks and group activities.

##### ENTERPRISE

Communication, team work.

##### CREATIVE

Making minibeast hotels.

### STARTER ACTIVITY

Register the students and share the lesson objectives with them.

**'Minibeast Bingo' or 'Top Trumps':** See minibeasts sheets to support this activity, 'Top Trumps' from the Woodland Trust, Nature Detectives resources ([www.naturedetectives.org.uk](http://www.naturedetectives.org.uk)).

### MAIN PART OF LESSON

**Minibeast Hunt:** Split the students into 3 or 4 groups. Give each group the necessary equipment (pooters, sweep nets, minibeast catcher). Student to spend 20 minutes outside collecting minibeasts and then return to class to share their findings.

**Minibeast Observation:** Ask the students to share their findings with their peers and record their findings onto their worksheets. In addition to the minibeasts that the students find, it is also good to have some more 'exotic' bugs to show them at the end e.g. cockroaches, locusts, Mario worms. These 'exotic' bugs can be easily sought from local pet suppliers and cost very little.

**Challenge:** Students to make their own minibeast hotels (see website below).

[http://www.bbc.co.uk/wales/wildaboutnature/outandabout/makedo/ladybird\\_home.shtml](http://www.bbc.co.uk/wales/wildaboutnature/outandabout/makedo/ladybird_home.shtml)

### PLENARY

**Log Sheet:** Pupils to record their activities via words, drawings and photographs onto the log sheet.

Access groups to describe their findings to the teaching assistant who then records their observations onto their log sheets.

**Extension Tasks:** Beetle drive (This can be purchased or you can make your own.).

**Risk Assessment:** Teacher in charge to ensure all correct and appropriate risk assessments are carried out to ensure the health and safety of all of the students in the group.

#### Disclaimer

The template used to produce this document, is purely for guidance only and can be adapted to suit individual

VISUAL	Minibeast bingo. Minibeasts.
AUDITORY	Direct teaching/explanation.
KINAESTHETIC	Minibeast hunt. Minibeast hotel.
SKILLS	Development of ID skills.
SEN	Over view. Behaviour/epilepsy plans.
REWARDS	Linked to school reward system.

# Minibeast Bingo



















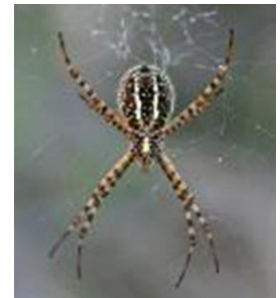
















## Minibeast Hunt

**Task:** Collect a range of minibeads from the school grounds and record what you have found.

[illegible]